



# GV-IP Speaker User's Guide

This document describes how to add and control GV-IP Speaker with GV-Control Center and GV-VMS. And how to locate the speaker and update its firmware using GV-IP Speaker Setting Kits.

<b>1. Compatible Software .....</b>	<b>1</b>
<b>2. Adding to GV-Control Center .....</b>	<b>2</b>
2.1 Searching for a Speaker .....	2
2.2 Manually Adding a Speaker .....	3
2.3 Associating a Speaker with a Camera .....	4
2.4 Speaker Controls .....	5
<b>3. Adding to GV-VMS .....</b>	<b>7</b>
3.1 Searching for a Speaker .....	7
3.2 Manually Adding a Speaker .....	8
3.2 Associating a Speaker with a Camera .....	9
3.3 Speaker Controls .....	9
<b>4. GV-IP Speaker Setting Kits .....</b>	<b>11</b>
4.1 Changing the IP Address .....	14
4.2 Updating the Firmware .....	15

## 1. Compatible Software

- **GV-Control Center** V4.2.0 or later
- **GV-VMS** V17.4.7 / V18.3.2, patch files required



## 2. Adding to GV-Control Center

Add a speaker to GV-Control Center and assign the speaker to a channel.

### 2.1 Searching for a Speaker

To use the auto search function, the speaker must be installed on the same LAN as GV-Control Center.

1. On the Host List, click the **Add** button > **Add Host** > **Search Host**.
2. In the Search Host dialog box, select the discovered speaker.
3. You are prompted to enter ID and Password. By default, the ID is **admin** and the Password is **admin123**. Click **OK**.
4. You can add multiple IP speakers by entering their respective ID and Password.
5. Click **Add Selected Hosts**. The speaker is added to the Host List.

---

**Note:** To change the default ID and Password, you need to install the GV-IP Speaker Setting Kits, and access **Setting** > **ONVIFParam**. See 4. *GV-IP Speaker Setting Kits*.

---



## 2.2 Manually Adding a Speaker

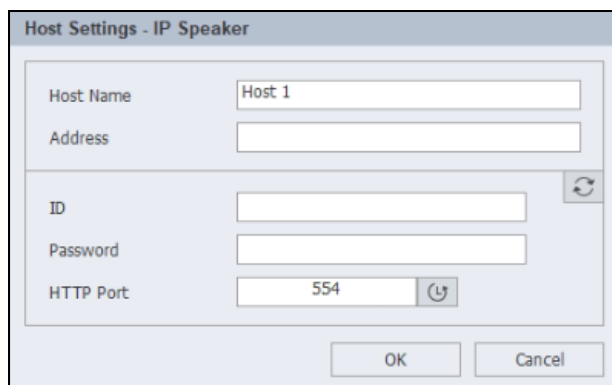
To use this method, you must already know the IP address of the speaker in order to add it to GV-Control Center.


---

**Note:** The speaker, by default, has a DHCP-enabled IP address, and no fixed IP address. See 3. *GV-IP Speaker Setting Kits* for discovering its IP address.

---

1. On the Host List, click the **Add** button > **Add Host** > **Add IP Speaker**.
2. On this dialog box, configure the following settings:



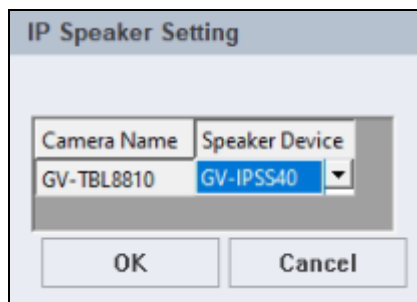
- **Host Name:** Name the speaker.
  - **Address:** Type the IP address of the speaker.
  - **ID & Password:** Type ID and Password. By default, the ID is **admin** and the Password is **admin123**.
  - **HTTP Port:** It is port 554 by default.
3. Click **Update Information**  to check if the speaker is connected successfully.
  4. Click **OK**. The speaker is added to the Host List.




## 2.3 Associating a Speaker with a Camera

You can associate a speaker with a camera of the following hosts: VMS/DVR/NVR, IP Camera, Video Server, Recording Server, SNVR, FR Server, AI Guard, USAVision HD DVR/NVR/SNVR, USAVision IP Camera.

1. On the Host List, right-click a supported host, and select **IP Speaker Setting**.
2. Select a speaker under Speaker Device, and click **OK**. The speaker is associated.



There are two ways to broadcast audio through the associated speaker:

1. Drop the camera to Live View and click the **Microphone** icon  to broadcast.
2. Click the speaker on the Host List to broadcast. See *2.4 Speaker Controls* below.

---

### Note:

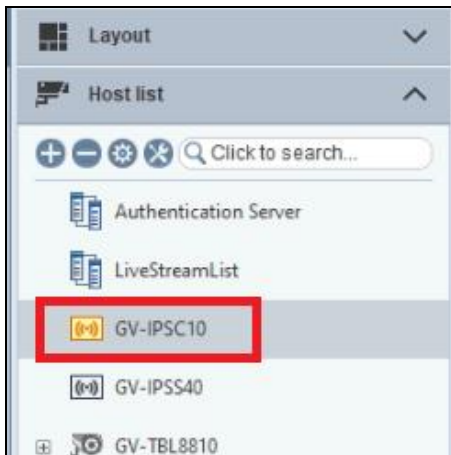
1. If you want to associate a camera with another speaker, remove the camera's image from the Live View window before enabling another speaker with the IP Speaker Setting.
  2. You can associate a speaker with multiple cameras.
-



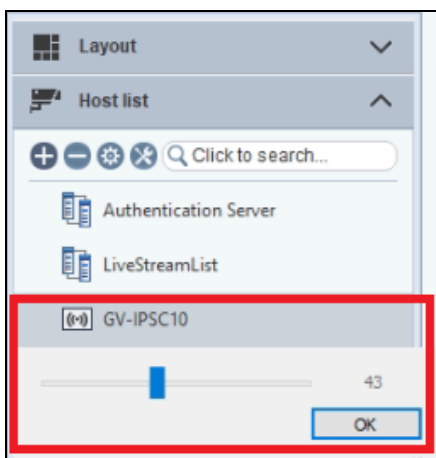
## 2.4 Speaker Controls

Make sure a microphone has been installed in the GV-Control Center system before broadcasting.

- **One-to-One Broadcast:** To broadcast audio through a specific speaker, press and hold the speaker icon. When the speaker is broadcasting, the icon turns orange.



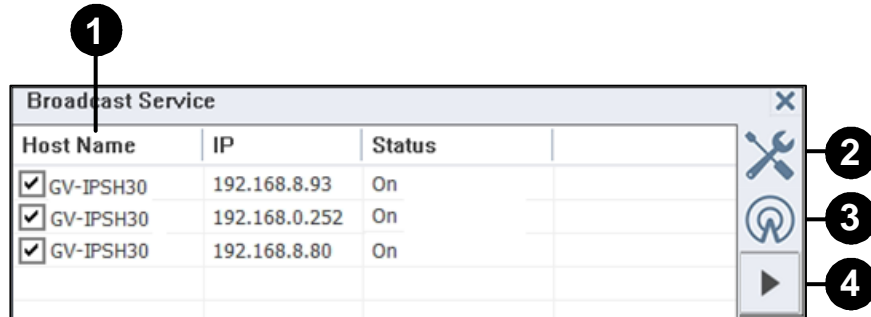
- **Volume:** To change the volume, right-click the speaker icon and select **Volume Setting**.



- **Play a WAV file:**
  1. Right-click the speaker icon, select **Play Wave File** and locate a .WAV file to play.
  2. When the "Want to Repeat Wave File?" message appears, click **Yes** to play the WAV file continuously.
  3. To stop playing, double-click the speaker icon.



- **Group Broadcast:** To broadcast audio through multiple speakers, select more than one speaker on the Host List, right-click on one of them, and select **Add to Broadcast Service** to display the control window shown below.



No.	Name	Description
1	Host	Select the desired hosts for audio broadcasting.
2	Setup	<ul style="list-style-type: none"> <li>■ <b>Select Audio File:</b> Locate a .wav file to play</li> <li>■ <b>Opacity:</b> Select the opacity level of the window from 20% (fully transparent) to 100% (fully opaque).</li> <li>■ <b>Always on top:</b> Always display the window on top of the screen.</li> </ul>
3	Broadcast	Start / stop audio broadcasting.
4	Play File	After selecting an audio file, click the button to start/stop playing.

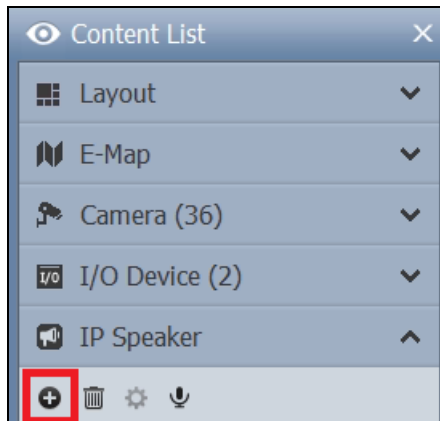


### 3. Adding to GV-VMS

#### 3.1 Searching for a Speaker

To use the auto search function, the speaker must be installed on the same LAN as GV-VMS.

1. Under the IP Speaker of the Content List, click the **Add** button > **Scan Device**.



2. In the Scan Device dialog box, select a discovered device.
3. You are prompted to enter ID and Password. By default, the ID is **admin** and the Password is **admin123**. Click **OK**.
4. Click **Add selected devices**. The speaker is added to the Content List.

---

**Note:** To change the default ID and Password, you need to install the GV-IP Speaker Setting Kits, and access **Setting > ONVIFParam**. See 4. *GV-IP Speaker Setting Kits*.

---



## 3.2 Manually Adding a Speaker

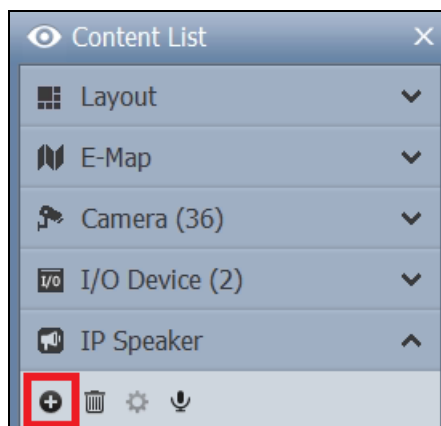
To use this method, you must already know the IP address of the speaker in order to add it to GV-VMS.

---

**Note:** The speaker, by default, has a DHCP-enabled IP address, and no fixed IP address. See [3. GV-IP Speaker Setting Kits](#) for discovering its IP address.

---

1. Under the IP Speaker of the Content List, click the **Add** button > **Add IP Speaker**.



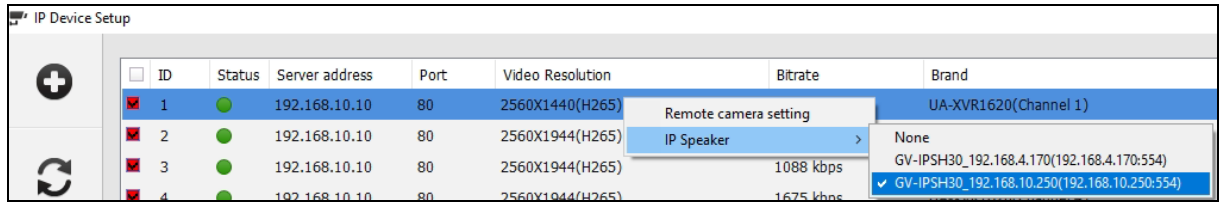
2. On the Add IP Speaker dialog box, configure the following settings:
  - **Name:** Name the speaker.
  - **IP:** Type the IP address of the speaker.
  - **Port:** Change it if necessary or keep the default value 554.
  - **ID & Password:** Type ID and Password. By default, the ID is **admin** and the Password is **admin123**.
3. Click **OK**. The speaker is added to the Content List.






### 3.2 Associating a Speaker with a Camera

In the IP Device Setup dialog box, right-click a camera, select **IP Speaker** and select a speaker. You can associate a speaker with multiple cameras

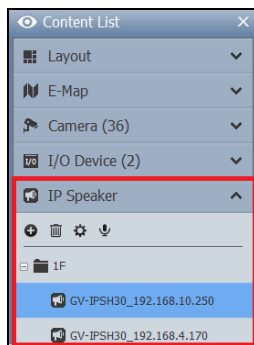









There are two ways to broadcast audio through the associated speaker:

1. Drop the camera to the live view grid and click the **Microphone** icon  to broadcast.
2. Click the speaker on the Content List to broadcast. See 3.3 *Speaker Controls* below.

### 3.3 Speaker Controls

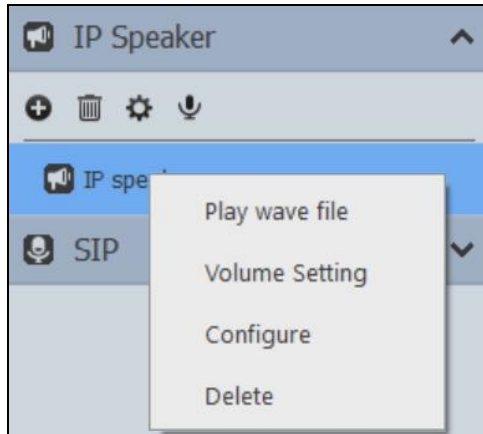
Make sure a microphone has been installed in the GV-VMS system before broadcasting.



Function	Description
<b>Add</b> 	<ul style="list-style-type: none"> <li>■ <b>Scan Device:</b> Detect speakers on the same LAN as GV-VMS.</li> <li>■ <b>Add Group:</b> Create a group for speakers</li> </ul>
<b>Delete</b> 	Delete a listed speaker or a created group.
<b>Configure</b> 	Select a speaker and click the icon to configure its name, IP address, port, login ID and password.
<b>Speaker</b> 	Press and hold the icon. The icon turns green  . The operator can then broadcast audio through a selected group of speakers.
<b>Speaker</b> 	Press and hold the icon. The icon turns blue  . The operator can then broadcast audio through a selected speaker.



When you right-click a speaker on the Content List, you will have the following options:

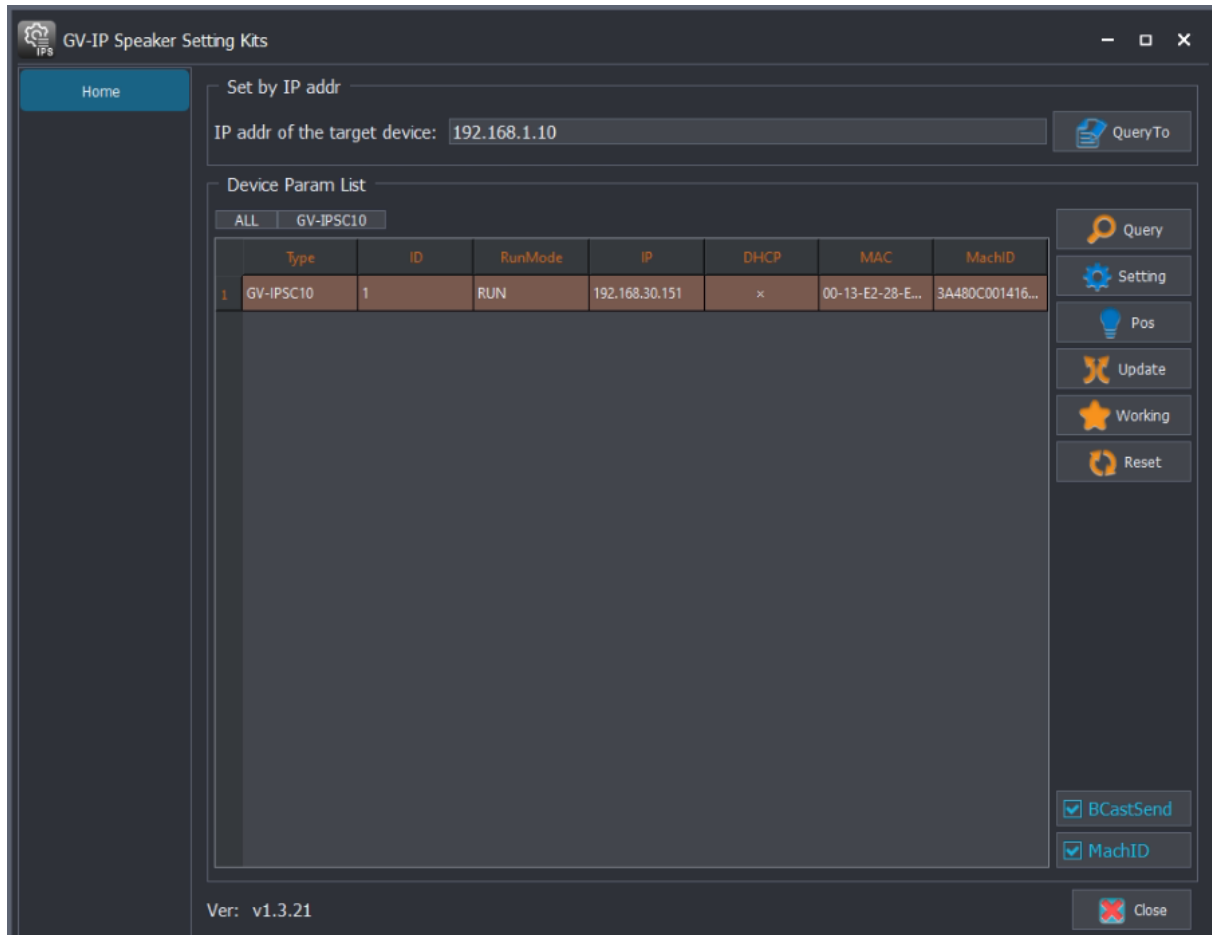


Function	Description
<b>Play WAV File</b>	Plays a selected WAV file. To stop playing, double-click the speaker icon.
<b>Volume Setting</b>	Changes the volume of the speaker.
<b>Configure</b>	Changes the connection settings of the speaker.
<b>Delete</b>	Removes the speaker from the Content List.

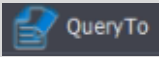
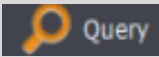


## 4. GV-IP Speaker Setting Kits

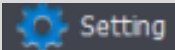
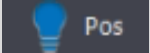
Download and install the GV-IP Speaker Setting Kits from our [download page](#).






The controls in the window:

Function	Description
<b>Query To</b> 	If you already know the IP address of the speaker, type its IP address in the left field and click <b>Query to</b> to find it in the network.
<b>Query</b> 	Find the IP address of the speaker, under the same LAN as the GV-IP Speaker Setting Kits and GV-Control Center.



<p><b>Setting</b></p> 	<p>When you click the Setting button, you will be prompted to enter Use and Password. By default, the Use ID is <b>admin</b> and the Password is <b>admin123</b>.</p> <p><b>[NormParam]</b></p> <ul style="list-style-type: none"> <li>■ <b>DevID:</b> The Device ID.</li> <li>■ <b>Dev Network Param Setting:</b> Configure a fixed IP address for the speaker. Or select <b>DHCP</b> to have an IP address assigned by a DHCP server within the network.</li> <li>■ <b>Update IP:</b> The option is used to update the firmware of the speaker. Enter the IP address of the PC used to update the firmware.</li> <li>■ <b>Confirm Verify:</b> Enable to check any IP conflicts.</li> <li>■ <b>ReVal:</b> Return factory default settings.</li> <li>■</li> </ul> <p><b>[ONVIFParam]</b></p> <p>By default, the Use ID is <b>admin</b> and the Password is <b>admin123</b>. You can change both ID and Password.</p> <p><b>[SipParam]</b></p> <p>Connect a GV-IP Speaker to the SIP server. Use the SIP server to call the speaker and speak into the microphone installed on the SIP server in order to broadcast via the speaker.</p> <ul style="list-style-type: none"> <li>■ <b>RegIp:</b> Type the IP address of the SIP server.</li> <li>■ <b>RegPort:</b> The port of the SIP server is 5060 by default.</li> <li>■ <b>Use:</b> Type the ID number of the speaker as assigned on the SIP server.</li> <li>■ <b>Password:</b> Type the password of the speaker as assigned on the SIP server.</li> </ul> <p><b>[Setting]</b></p> <ul style="list-style-type: none"> <li>■ <b>CompatProgram:</b> Keep the compatible programs option turned OFF.</li> <li>■ <b>1/PlayPriorityH, 1/PlayPriorityM, 1/PlayPriorityL:</b> Set High, Medium and Low priorities to the protocols IP, SIP, ONVIF / RTSP. The default order of priority is IP, SIP, and ONVIF / RTSP.</li> </ul>
<p><b>Pos</b></p> 	<p>Click the button to play a sample video through the speaker.</p>



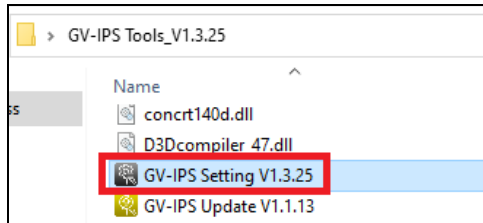
<p><b>Update</b></p>  Update	<p>To update the speaker firmware, see <i>4.2 Updating the Firmware</i>.</p>
<p><b>Working</b></p>  Working	<p>Change the Run Mode of the speaker from BOOT to RUN.</p>
<p><b>Reset</b></p>  Reset	<p>Restart the speaker.</p>
<p><input checked="" type="checkbox"/> BCastSend</p>	<p>Enable this option to use the broadcasting method to set up a speaker when the speaker and the computer used for configure it are on different network segments.</p>
<p><input checked="" type="checkbox"/> MachID</p>	<p>Machine ID. Enable <b>BCastSend</b> and <b>MachID</b> for speaker configurations when two speakers have the same IP address.</p>



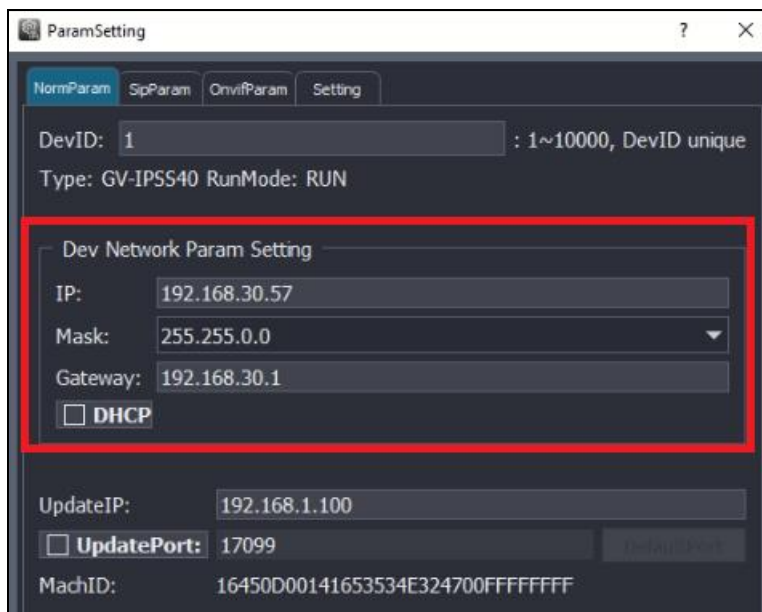
## 4.1 Changing the IP Address

To change the IP address of a speaker, follow the steps below:

1. Run **GV-IPS Setting**.



2. Click **Query** to detect speakers on the same LAN.
3. Select a speaker in the list.
4. Click **Setting**. You are prompted to enter the ID and password of the speaker.
5. Change the speaker's IP settings. Click **OK**.

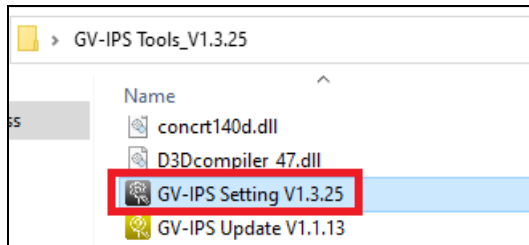


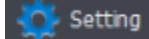


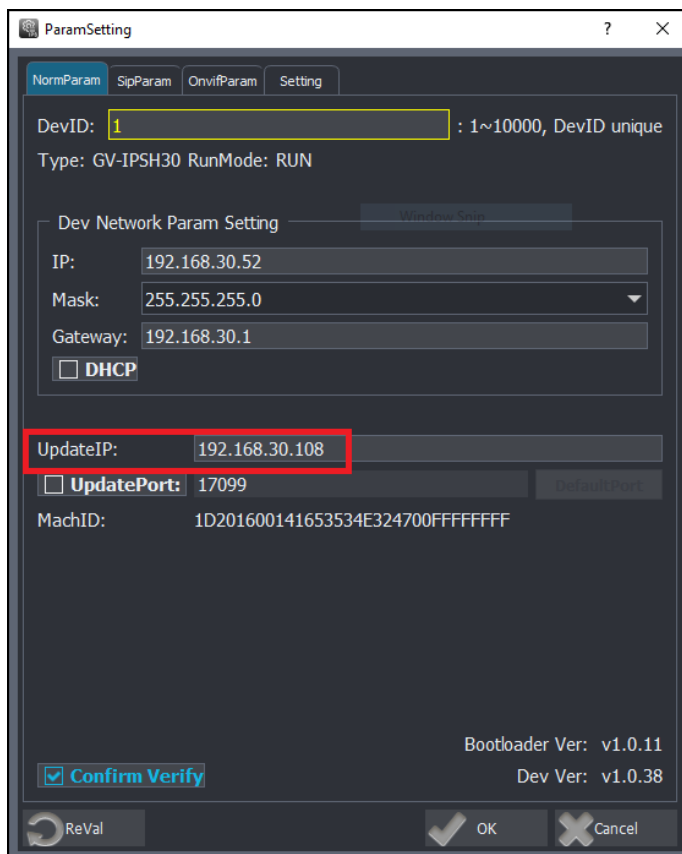
## 4.2 Updating the Firmware

To update the speaker's firmware, follow the steps below:

1. Run **GV-IPS Setting**.

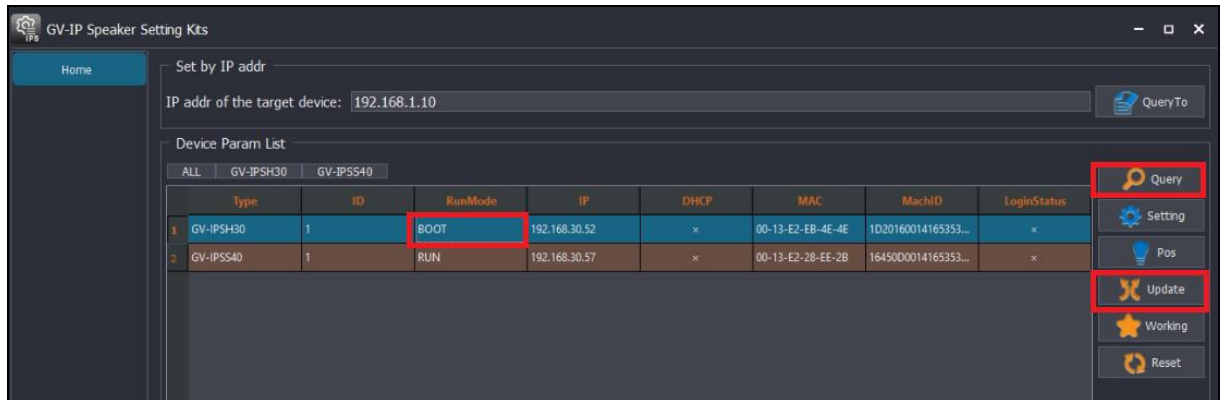


2. Click **Query** to detect speakers on the same LAN.
3. Select a speaker in the list.
4. To specify the IP address of the PC used to upgrade firmware, click  and type the IP in the **Update IP** field.



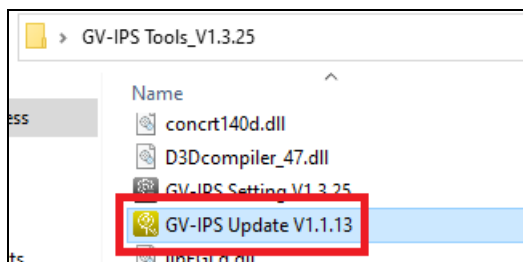


- To connect the speaker to the PC used to update the firmware, click **Update**, enter the speaker's ID and password, and then click **Query**. The Run Mode of the speaker in the list changes from RUN to BOOT.

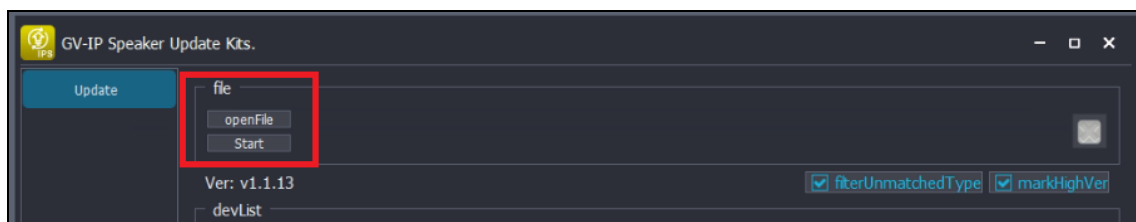


**Note:** If the speaker disappears from the list after you click **Update**. Wait a minute and then click **Query** to detect it again.

- Run **GV-IP Speaker Update Kits**.



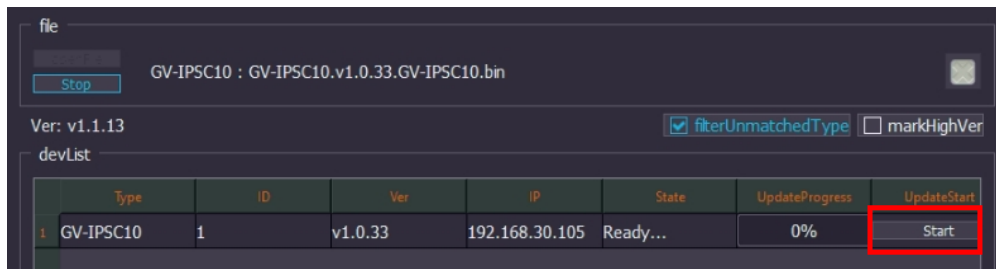
- Click **Open File** to locate a firmware file.
- Click **Start** to search for speakers in BOOT mode.







- C、 Select a speaker in the list
- D、 Click **Start** to start firmware upgrade.




On the **GV-IP Speaker Update Kits** user interface:

- **filterUnmatchedType**: When the option is enabled, only search for speakers with the same firmware versions.
- **markHighVer**: When the option is enabled, it will detect new firmware version available, and display the message “Higher version”.

1	GV-IPSC10	1	v1.0.33	192.168.30.105	Higher version
---	-----------	---	---------	----------------	----------------

---

**IMPOPTANT:** If a speaker's Run Mode is set to **BOOT**, the connection to the speaker is terminated. To change the Run Mode from **BOOT** to **RUN**, select the speaker from the list and click **Working** .

---